

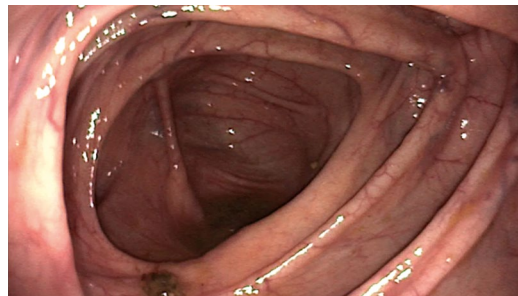
# Made for you: the **VERSA** **EPK-V1500c Video Processor**

*Your affordable, complete, and versatile platform*



VERSA is a PENTAX Medical high-definition platform, based on CMOS and LED technology. With the tailor-made peripheral devices and well-known PENTAX Medical sales and service infrastructure, we provide you with a HD solution for every budget. If you are looking for a complete and convenient to move system that makes diagnostics and day to day therapeutic procedures easy to perform, then VERSA is your answer.

## Enhanced HD imaging



### Improved diagnosis with HD

HD image quality supported by an image enhancement feature for high contrast observation of mucosal pattern as well as vascularization.

### Consistent performance, minimized running costs

VERSA is based on a CMOS HD sensor technology and a built-in LED light source to ensure long lifetime and consistent performance. The technology helps to minimize maintenance costs and addresses running costs concerns. VERSA's USB recording function helps this reductions, as pictures can be documented digitally with no additional printing costs.

### Reliable PENTAX Medical service infrastructure

PENTAX Medical's VERSA platform comes with a comprehensive service offering, underlining our commitment as a trusted partner in after-sales service. Our well-established service infrastructure minimizes turn-around times and follows highest quality standards. All repairs are backed by our "warranty program".

## VERSA Video Processor (EPK-V1500c)

Video output	Y/C, DVI, RGB, SYNC, AV
Image enhancement	E-stressed mucosal morphology or profile for increasing the sharpness of endoscopic images. Profile enhance level has four gears to choose from.
Light Source	LED
Dimensions [ W x H x D / weight ]	452 x 167 x 456 mm / 11.5 kg
Color tone adjustment	"R", "B" adjustment: $\pm 25$ steps
Brightness adjustment	"Y" adjustment: $\pm 25$ steps
Freeze, save, review	Endoscopic images can be frozen and saved, so that images can be reviewed.
Gain control	(OFF, 1, 2 and 3)
Metering mode	Average; Peak
White balance adjustment	Press the white balance switch to perform the white balance adjustment.
Voltage	100~240VAC
Power frequency	50Hz/60Hz
Air flow	2 steps (H/L)

**EC** **REP** **EMEA Headquarter**  
**Germany**

PENTAX Europe GmbH  
Julius-Vosseler-Straße 104 . 22527 Hamburg  
Tel.: +49 40 / 5 61 92 - 0 . Fax: +49 40 / 5 60 42 13  
E-mail: info.emea@pentaxmedical.com . www.pentaxmedical.com

TÜV Rheinland CE 0197 • Medical device class: IIa • This product must be used only by healthcare professionals. Before use and for detailed product specifications, please refer to the instructions for use. In the interest of technical process, specifications may change without notice.

**PENTAX**  
**MEDICAL**  
Excellence in Focus